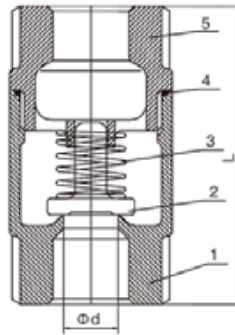


2 piece-spring vertical check valve threaded - swing check valve

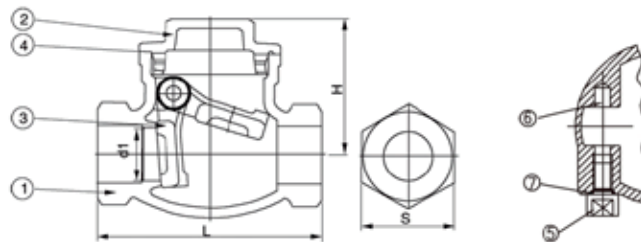
ITEM	PARTS	MATERIAL	QTY
1	BODY	CF8/CF8M	1
2	DISC	CF8/CF8M	1
3	SPRING	304/316	1
4	JOINT GASKET	PTFE	1
5	CAP	CF8/CF8M	1



Terugslagklep rechte uitvoering geveerd

	D	L
Terugslagklep recht veerbelast 3/8"	10	55
Terugslagklep recht veerbelast 1/2"	15	55
Terugslagklep recht veerbelast 3/4"	20	60
Terugslagklep recht veerbelast 1"	25	70
Terugslagklep recht veerbelast 1.1/4"	32	80
Terugslagklep recht veerbelast 1.1/2"	40	85
Terugslagklep recht veerbelast 2"	50	100

ITEM	PARTS	MATERIAL
1	BODY	CF8M
2	CAP	CF8M
3	DISC	CF8M
4	JOINT GASKET	PTFE
5	PLUG	SS316
6	HANGER PIN	SS316
7	THRUST WASHER	PTFE



Terugslagklep swing-check

NW	d1	H	L	S
Terugslagklep swing check 1/2"	15	41,0	65	26
Terugslagklep swing check 3/4"	20	49,5	80	31
Terugslagklep swing check 1"	25	55,0	92	39
Terugslagklep swing check 1.1/4"	32	62,5	105	50
Terugslagklep swing check 1.1/2"	40	70,5	120	58
Terugslagklep swing check 2"	50	79,5	140	68
Terugslagklep swing check 2.1/2"	65	93,0	180	87
Terugslagklep swing check 3"	80	104,0	200	102